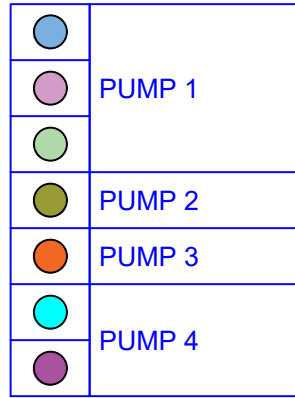
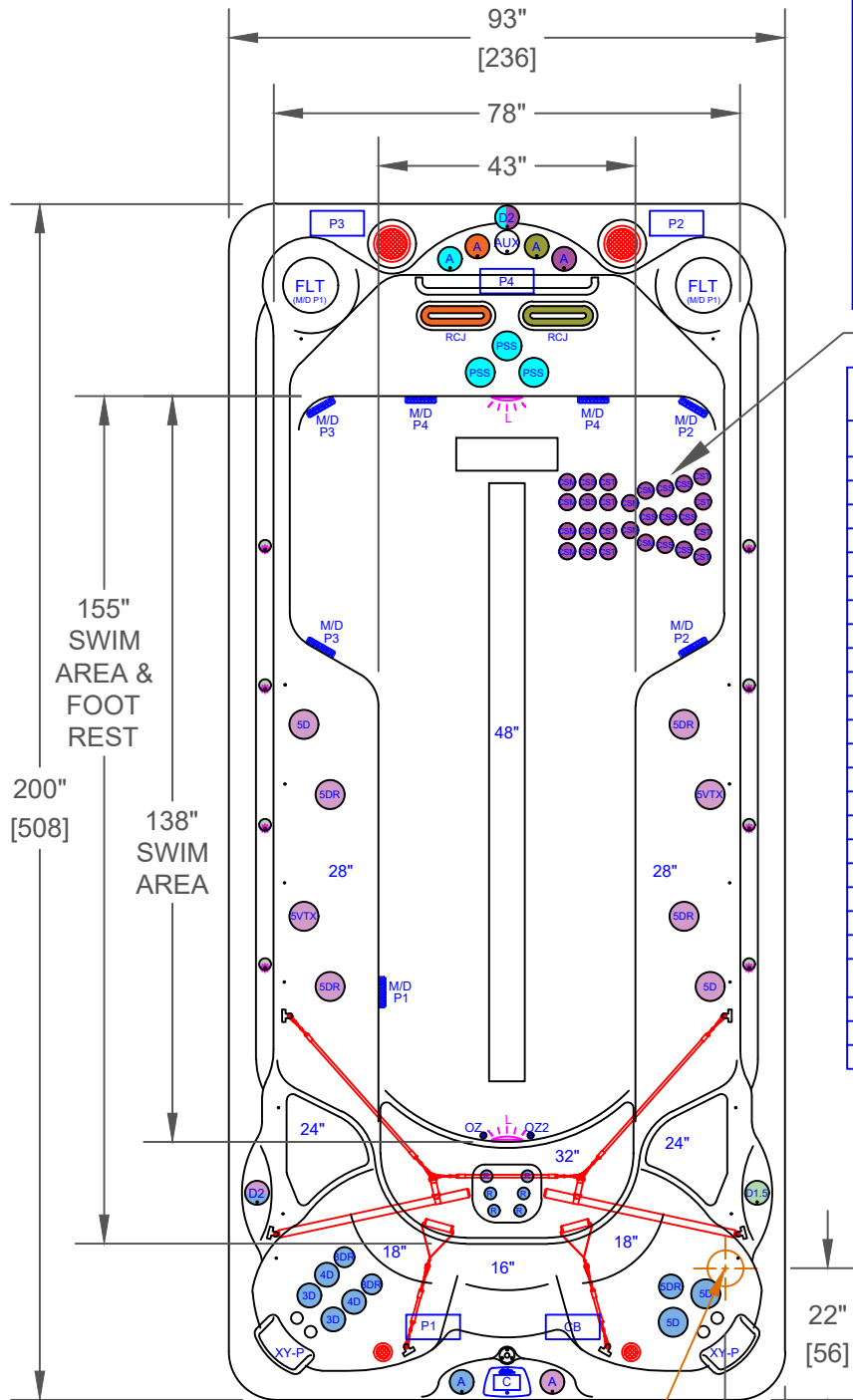


NOTES:
 1. DUE TO OUR CONTINUOUS IMPROVEMENT PROGRAM, ALL MODELS AND SPECIFICATIONS ARE SUBJECT TO CHANGE WITHOUT NOTICE.



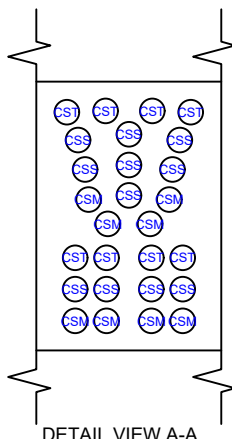
P1	PUMP 1
P2	PUMP 2
P3	PUMP 3
P4	PUMP 4
CB	CONTROL BOX

F-1655 - LEGEND

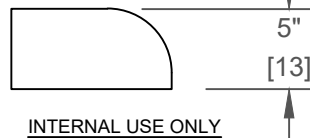
SYMB.	DESCRIPTION	PART NUMBER	QTY.
R	RAIN JET 1"	PLU670-2451S SGMS	6
3D	3" MINI STORM DIRECTIONAL VECTOR X	PLUCS2445009SS-HLG	2
3DR	3" MINI STORM TWISTER VECTOR X	PLUCS2441049S-HLG	2
4D	4.5" POLY STORM DIRECTIONAL VECTOR X	PLUCS2446009SS-HLG	2
5D	5" POWER STORM DIRECTIONAL VECTOR X	PLUCS2447009SS-HLG	4
5VTX	5" POWER STORM TRI DIRECTIONAL VECTOR X	PLUCS2447019S-HLG	2
5DR	5" POWER STORM TWISTER VECTOR X	PLUCS2447049SS-HLG	5
CST	CLUSTER STORM AIR MAX TRI-STREAM	PLU239-8918S-HLG	8
CSS	CLUSTER STORM AIR MAX SOLO-STREAM	PLU239-8908S-HLG	11
CSM	CLUSTER STORM AIR MAX MULTI-STREAM	PLU239-8928S-HLG	8
RCJ	RIP CURRENT JETS	PLU210-5168S-HLG	2
PSS	POWER STREAM JETS	PLU210-0838S	3
D2	ORION 2" WATER DIVERTER VALVE	PLUCS600-7609-CDHL	2
A	ORION AIR CONTROL VALVE	PLUCS660-7609-CDHL	6
-	27" STAINLESS STEEL HANDRAIL		1
FLT	50 SQ. FT. BIO-CLEAN FILTER WITH TELEWEIR	517-4609L-HLG	2
M/D	5" MAIN DRAIN 2.5"S	PLU644-5419-HLG V	7
TH	TETHER ANCHOR		1
EA	FITNESS ANCHOR		6
XY-P	TEXTURED Y-PILLOW (WHITE)		2
C	CAL SPAS TOUCH 2 BLACK WITH AUXILIARY PANEL		1
OZZ	TWIN PURE SILK™ DUAL OZONATOR WITH MAZZIE INJECTORS AND MIXING CHAMBERS		1
-	LED DUAL HYDRO-STREAMERS PLUS™ WITH D1.5 VALVE		1
L	5" MULTI COLORED LED LIGHT		2
-	EXTERIOR LED CAL SPAS LOGO		1

OPTIONS

SYMB.	DESCRIPTION	OPTION NUMBER
-	DYNAMIC FLOW CONTROL WITH VARIABLE SPEED PUMPS *CHANGES EQUIPMENT TO GECKO	OPT25-139VSP3
-	PURE CURE UV PURIFICATION SYSTEM	OPT25-191B
-	CAL GRIP DECKING (FLOOR & STEPS)	OPT25-CG1655-SBB
-	CAL CONNECT RF MODULE	OPT25-168RF
⊗	FREEDOM SOUND SYSTEM BLUETOOTH, POWERED SUBWOOFER AND 4X SPEAKERS (2X 3" BLACK 2X 6" WHITE)	OPT25-FS622
-	THERMO-GUARD FULL FOAM (THIS OPTION WILL REPLACE THERMO LAYER)	OPT25-900-XL



STUB UP



PROPRIETARY AND CONFIDENTIAL THE INFORMATION CONTAINED IN THIS DRAWING IS THE SOLE PROPERTY OF CAL SPAS. ANY REPRODUCTION IN PART OR AS A WHOLE WITHOUT THE WRITTEN PERMISSION OF CAL SPAS IS PROHIBITED.		 CAL SPAS INC. 1462 EAST NINTH STREET, POMONA, CA 91766	
SPECIFICATIONS		TITLE	JET LAYOUT - STD
DIMENSION (in)	93"x200"x51"	LINE	SWIM-PRO
DIMENSION (cm)	236x508x130	MODEL	2025 SPA LINE COMMANDER
DRY WEIGHT	2850 LBS [1293 Kg]	NUM	F-1655
FILLED WEIGHT	23700 LBS [10750 Kg]	DWG NO.	CS003385
WATER CAP.	2500 GAL [9463 L]	REV	A
SCALE NTS		SHEET 1 OF 1	